

Bild 10.8 Stream lines for the fluid flow around an obstacle in wave loading at the time point of 41,000 time steps (4 seconds into the simulation with a wave of a duration of 1 s).

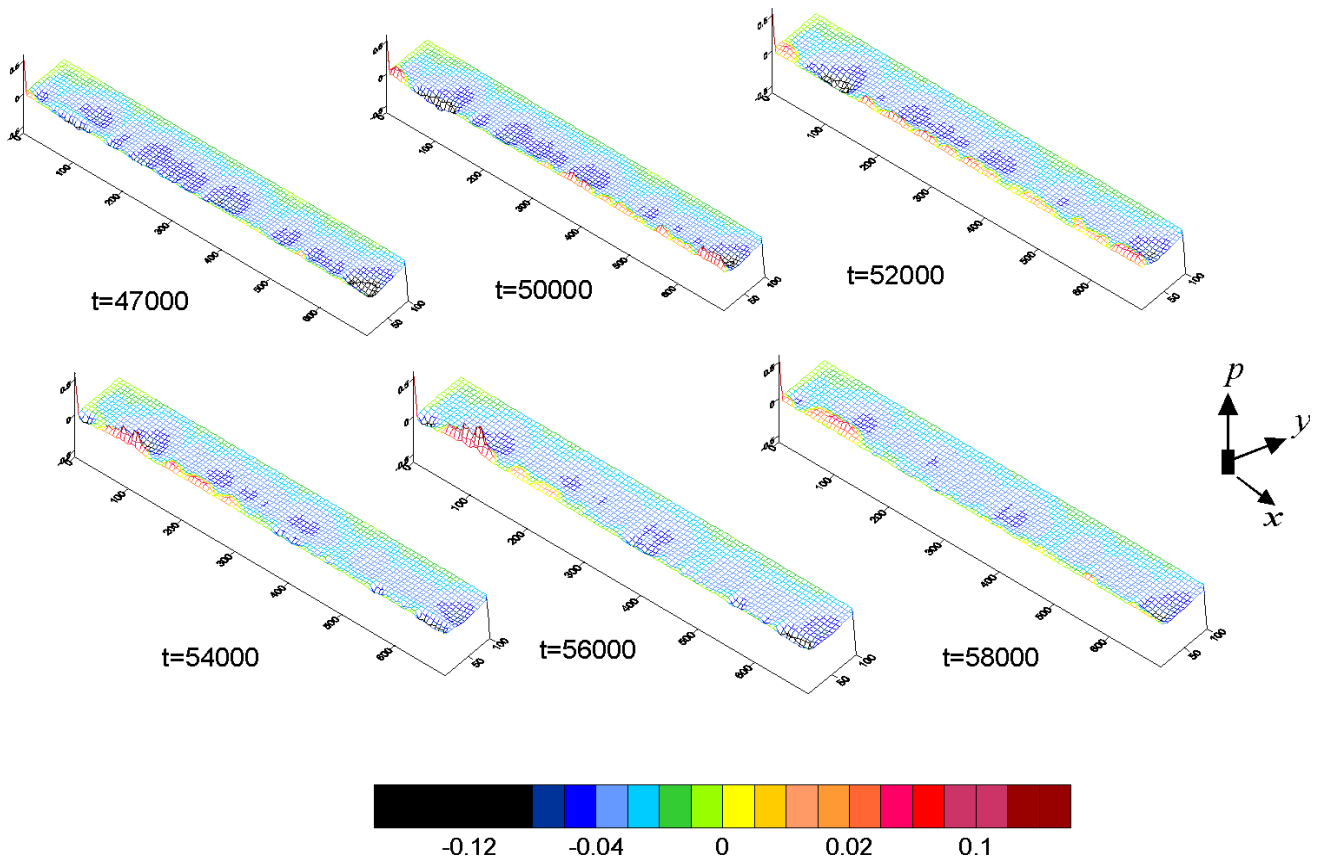


Bild 10.9 Subsoil excess pore pressure for wave loading with an obstacle. The regions where the greatest damage potentially takes place is just before and behind the obstacle.

